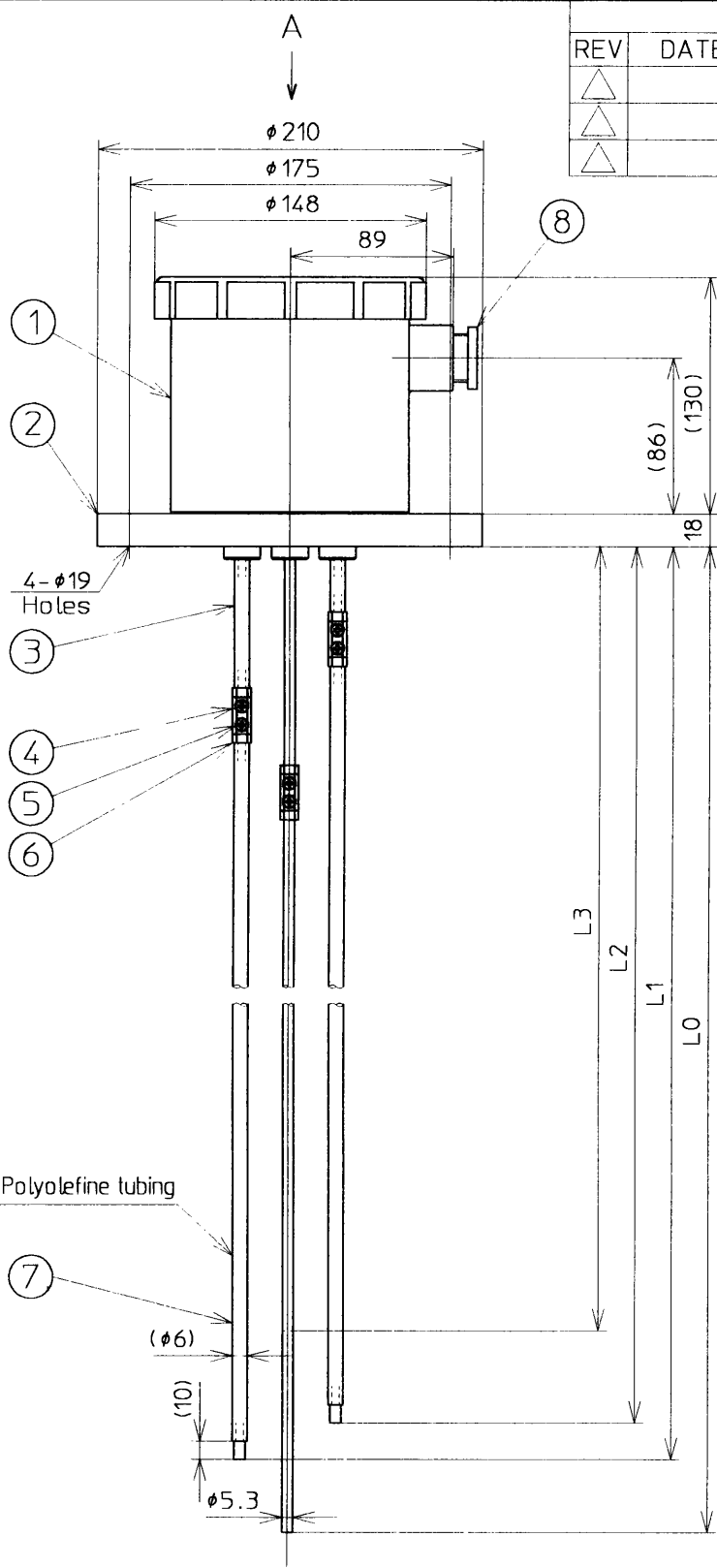
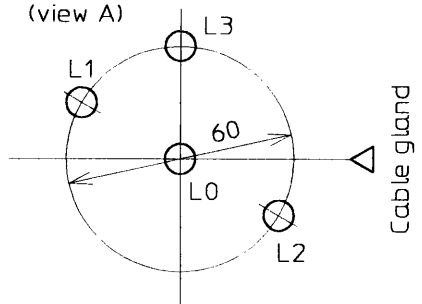


REVISIONS				
REV	DATE	DESCRIPTION	BY	APP. BY
△				
△				
△				

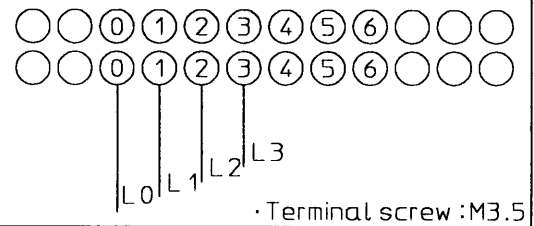
DRAWING NO. SA 900509 △



Layout of Electrode rod (view A)



WIRING DIAGRAM



Dimension of Electrode rod

Tag NO.			
L0			
L1			
L2			
L3			
Qty.			

Note
 ·L0 Electrode rod is not covered by tube.

Specifications

- Flange size :Equivalent JIS 10K 100A (Proviso 4 Holes)
- Cable inlet :Equivalent JIS F 20a (G 3/4)
- Working temperature :-20 to 50℃ (Avoid dewing)
- Protection :IP45

8	Cable gland	1	Brass (C3604BD, Nickel plating)
7	Outside electrode rod		316 Stainless steel
6	Lock nut		316 Stainless steel
5	Lock screw		316 Stainless steel
4	Connector		316 Stainless steel
3	Inside electrode rod	4	316 Stainless steel
2	Flange	1	PVC
1	Terminal box	1	ABS
P.No.	Name	Qty.	Material

DATE	06-11-'98	DR. BY	<i>M. Toyoda</i>
SCALE	N.T.S.	CH. BY	<i>M. Fujita</i>
UNITS	MILLIMETERS	APP. BY	<i>S. Mori</i>

TITLE
OUTLINE DRAWING OF ELECTRODE LEVEL SENSOR

MODEL
 FE2-4



DRAWING NO. SA 900509 △

S P E C I F I C A T I O N S

1. NAME : ELECTRODE LEVEL SENSOR
2. MODEL : F E 2 - □
 └───┬───
 └───┴─── Electrode qty. : 2 ~ 7
3. MEASURING OBJECT : Clean and conductive liquid
4. ENVIRONMENT
 4.1 Working Temperature : -20 to 50 °C (Get rid of dew)
5. CONSTRUCTION : IP45
6. PHYSICAL
- 6.1 Mounting : Flange
- 6.2 Material
- (1) Terminal Box : Acrylonitrile-butadiene-styrene
- (2) Flange : Polyvinyl chloride
- (3) Electrode Rod : 316 Stainless Steel
- (4) Connector : 316 Stainless Steel
- (5) Insulation Tube : Polyolefine (L_o electrode rod is not covered by Insulation Tube.)
- 6.3 Dimension
- (1) Flange : Equivalent JIS 10K 100A (Proviso 4 holes)
- (2) Electrode Rod : $\phi 5.3$
- 6.4 Cable Inlet : Equivalent JIS F 20a (G 3/4)
- 6.5 Mass : Approx. 1.6 kg (Except electrode rod)
- 6.6 Mass of Electrode Rod : Approx. 240 g/m

W A R R A N T Y

NOHKEN INC. products are warranted for a period of 1(one) year from date of original factory shipment, provided that handling, operation and maintenance of products shall be subjected to " NOHKEN's INSTRUCTION MANUAL ".