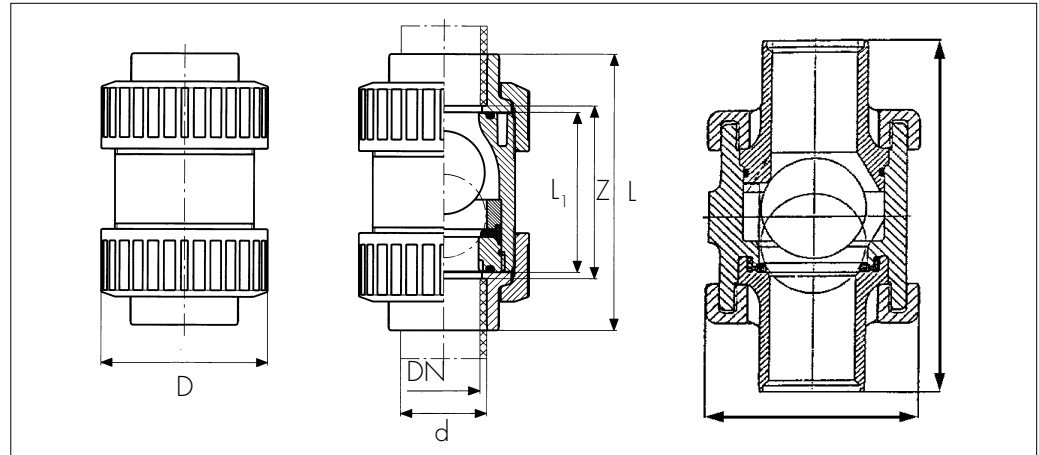


Dimensions for Type 360 Ball Check Valve

PVC

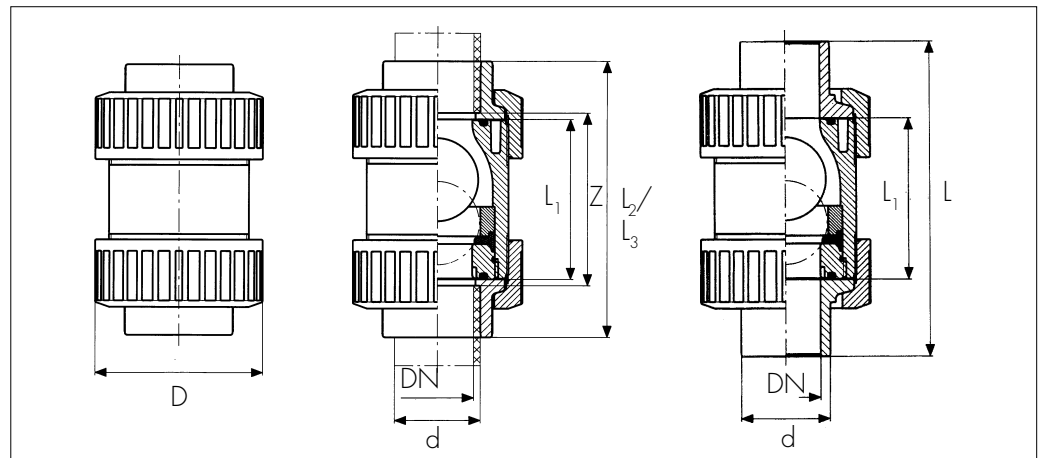


Z* Solvent cement socket valve (laying length)

Z** Threaded valve (laying length is herein defined as the dimension between the ends of pipe when threaded into valve to a depth equal to the nominal "Handtight" plus 1/2 turn)

Inch size	L inch	L ₁ inch	Z* inch	Z** inch	D inch	Weight lbs.
3/8	4.45	2.48	2.93	3.53	1.81	.27
1/2	4.49	2.48	2.70	3.53	1.81	.27
3/4	5.18	2.95	3.15	3.93	2.20	.45
1	5.62	3.11	3.34	4.35	2.64	.70
1-1/4	6.58	3.50	4.05	5.25	3.23	1.16
1-1/2	6.76	3.74	3.98	5.20	3.86	1.85
2	7.97	4.53	4.95	6.36	4.72	3.30
3	11.81	—	—	—	7.09	10.8

Polypropylene and SYGEF-PVDF



L Overall length of butt fusion valve

L₂ Overall length of metric fusion socket valve

L₃ Overall length of threaded valve

Z* Metric fusion socket valve (laying length)

Z** Threaded valve (laying length is herein defined as the dimension between the ends of pipe when threaded into valve to a depth equal to the nominal "Handtight" plus 1/2 turn)

OD d mm	ID DN mm	L inch	L ₂ inch	L ₃ inch	L ₁ inch	Z* inch	Z** inch	D inch	Weight lbs. PP	Weight lbs. SYGEF	Inch size
16	10	4.29	3.86	4.37	2.44	2.83	3.48	1.81	.17	.34	3/8
20	15	5.12	3.98	4.37	2.44	2.87	3.31	1.81	.17	.34	1/2
25	20	5.67	4.69	5.12	2.91	3.43	3.88	2.20	.30	.58	3/4
32	25	5.91	5.12	5.51	3.07	3.70	4.30	2.64	.45	.87	1
40	32	6.73	5.87	6.50	3.46	4.29	5.19	3.23	.84	1.46	1-1/4
50	40	7.52	6.38	6.57	3.70	4.57	5.12	3.86	1.35	2.30	1-1/2
63	50	8.66	7.68	7.83	4.45	5.55	6.28	4.72	2.46	4.32	2